

Annual report for Standing Conference on Problems Associated with the Coastline 2010/11

Andrew Bradbury - Chairman of Southern Coastal Group

Political representation

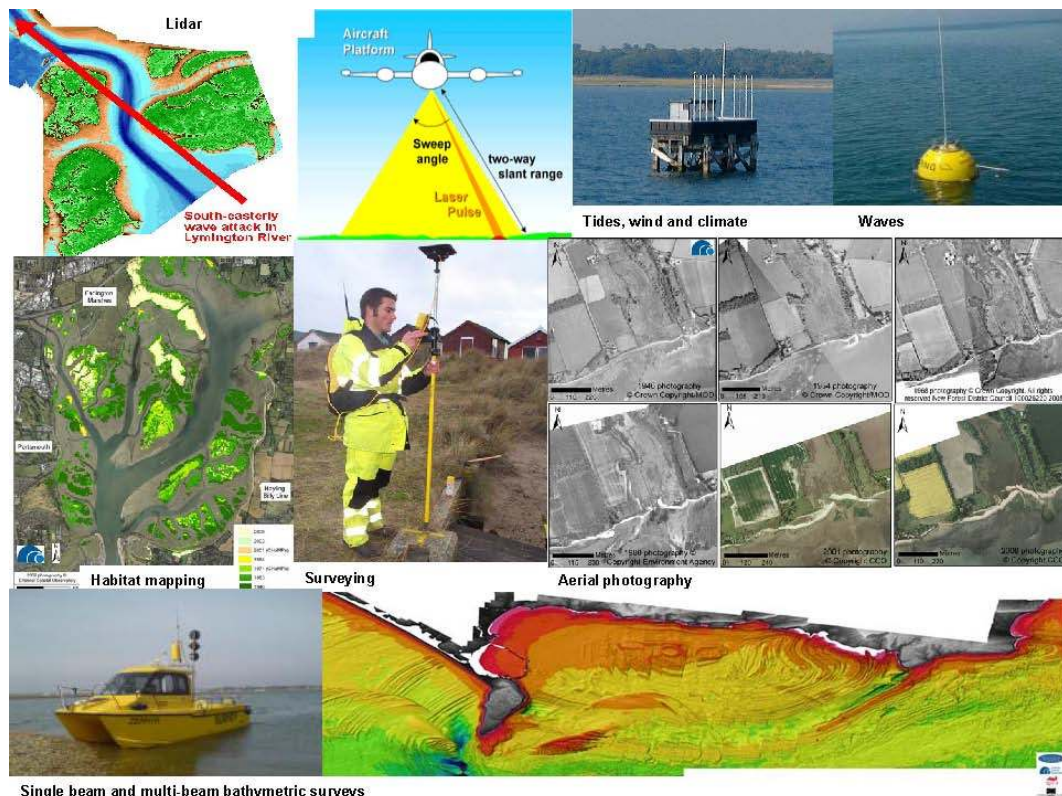
- The Coastal Group has been instrumental in raising the profile of the difficulties associated with funding schemes associated with coastal landsliding and development of new guidance to facilitate this. Political representation has been made by members and officers of the coastal group to the Secretary of State in Westminster. The successful outcome demonstrates both the technical prowess of the coastal group, and also the ability of the group to engage in key meetings at the highest political level.
- A positive rapport has been developed with the Regional Flood and Coastal Committees, with other bodies in our region and nationally with the other Regional Coastal Groups and other National Stakeholder Groups. Representatives of the coastal group have however registered concerns at the lack of Coastal authority elected member representation within the new RFCC structure.

Leadership

- Councillor Roger Elkins has continued to Chair SCOPAC which provides an important political voice for the south of England. The Southern Coastal Group maintains a sound relationship with its partner, SCOPAC and this is crucial to the delivery of many of the Southern Coastal Group Activities.
- In April 2011 Tim Kermode, one of the vice Chairman of the Southern Coastal Group, stood down following his retirement from the Environment Agency; his excellent service was acknowledged at his last meeting.

Coastal monitoring

- The Southern Coastal Group has led on the coordination and development of the highly successful southeast regional coastal monitoring programme, which has been running since 2002. A successful annual review event was supported by the Southern and South East Coastal Groups and attended by 80 officers.
- Many of the initiatives originally developed for the southeast regional coastal monitoring programme now form keystones of the proposed National Network of Regional Coastal Monitoring Programmes. The Southern Coastal group is also leading on development of this programme. A completed submission to the Environment Agency's National Review Group has been prepared, and approved. The approval sets the scene for an ongoing monitoring programme that will continue until 2017. The project has included collaboration of all of the other coastal groups nationally. The project provides an exemplar balance of national economies of scale, coordinated procurement and technical collaboration, whilst maintaining local skills and local delivery in line with the government's localism agenda.



www.channelcoast.org

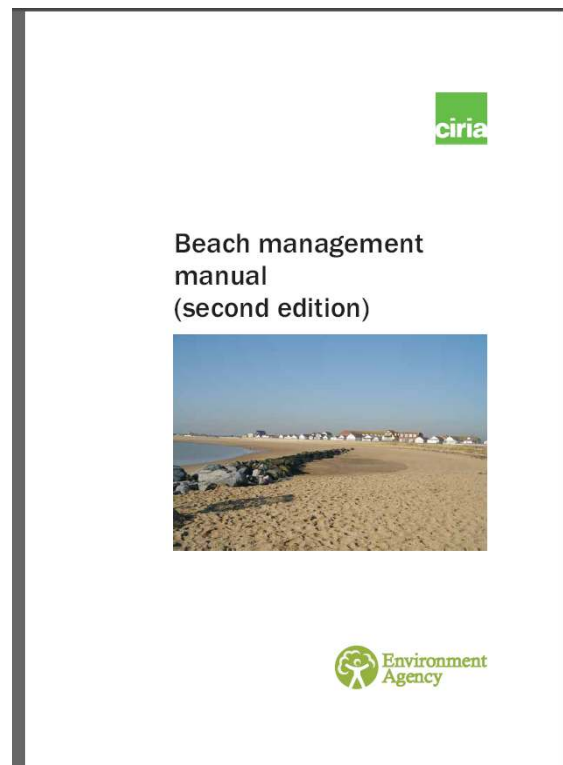
Events

- The new format half day field trip to Hengistbury head, held in June, was very successful. The event was attended by 11 elected members and 23 officers. Local support was provided by Bournemouth Borough Council, Christchurch Borough Council and New Forest District Council. Attendees were treated to presentations relating to a range of local issues including: the history of the site; geomorphology and defences; potential breaching of Double Dykes; archaeology; nature conservation; the influence of the Long Groyne, regional monitoring, and management of Mudeford Spit.



- CIRIA Beach Management Manual Launch - October 2010

SCOPAC has already contributed financially to the development of the new CIRIA Beach Management Manual and were hosts for the CIRIA Beach Management Manual regional launch on the 15th October at the National Oceanography Centre, Southampton. The event was attended by approximately 50 industry representatives, including officers, coastal engineers and scientists. Major contributions were made to the new manual by Southern Coastal Group Chairman Andy Bradbury who authored and co-authored several chapters of the new manual.



Training

- The back to basics approach to training has continued, following the success of the previous year. The focus has been on local succession planning and transfer of skills. The successful "A problem shared" workshop series has continued. This year's event entitled *The Design and Construction of Rock Groynes* was held at the National Oceanography Centre on 5th January 2011. Approximately 30 officers comprising coastal engineers and scientists attended a workshop, which included background information on the basic principles of rock groyne design and a presentation on conventional rock design versus low cost structures. Officers from Portsmouth CC and Borough of Poole shared their experience with local case studies. The event continues the series planned to further local professional development at very low cost, and truly within the spirit of the cooperation of the coastal group. With efforts to achieve succession planning within local authorities and the Environment Agency, this approach is becoming an important element of the training programme for future coastal engineers.

Communications

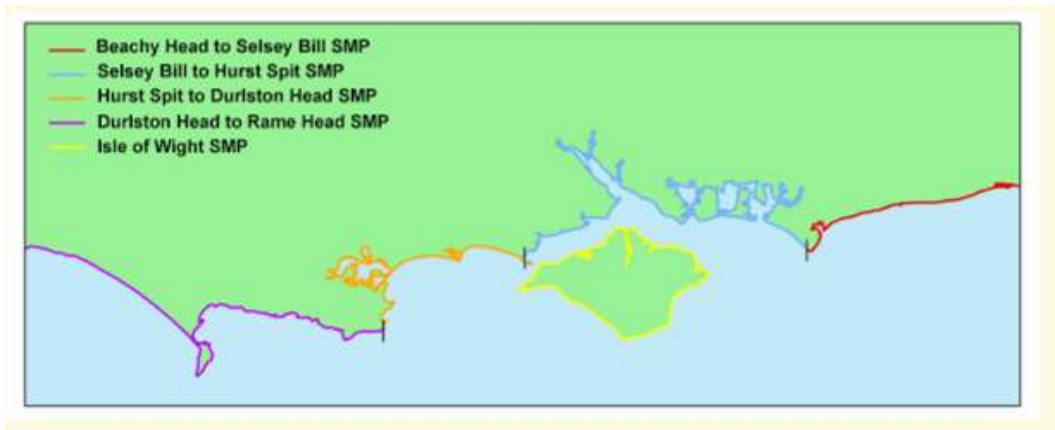
- Both the Southern Coastal Group and the SCOPAC websites have undergone a major overhaul. The sites now reflect the changing role of the coastal groups; they provide up-to-date summaries of recent and planned activities as well as administrative papers and summaries of research programmes.

The image displays two screenshots of websites related to coastal management. The left screenshot shows the SCOPAC website, featuring a header with the SCOPAC logo and the tagline 'STANDING CONFERENCE ON PROBLEMS ASSOCIATED WITH THE COASTLINE'. Below the header is a navigation menu with links for 'About Scopac', 'Research', 'Events', 'SMPs', 'Strategy Studies', 'Maps & Photos', and 'Meetings & Minutes'. The main content area includes a 'Welcome to SCOPAC' section with a map of the SCOPAC area of interest, ranging from Lyme Bay to Shoreham-by-Sea. The right screenshot shows the Southern Coastal Group website, featuring a header with the Southern Coastal Group logo and a navigation menu with links for 'Home', 'Useful Links', and 'Contact Us'. The main content area includes a 'Welcome' section with a map of the SCG area of operation, ranging from Portland Bill to Selsey Bill. Both websites provide information about their purpose, activities, and contact details.

- Outputs from the SCOPAC research programme are finding their way onto national agendas and several projects have provided major technical breakthroughs with wide applicability. In particular the investigations into regional wave climate are leading to development of ground breaking new design and assessment methods.

Strategic coastal management

- The Southern Coastal Group and SCOPAC have continued to make major contributions to the national and regional agenda of flood and coastal erosion risk management.
- An important role for both the Southern Coastal Group and SCOPAC has been to support the delivery of the second round of shoreline management plans. All of the Shoreline Management Plans were completed in accordance with government delivery targets and have now been approved.



Funding

- The Medium Term Programme forms a standing agenda item now and significant improvements to delivery of the capital programme have been made within the Southern Coastal Group. Strong support has been provided by EA officers from Southern and Wessex regions. Aspects of monitoring and coordination of the programme remain tricky, with the separation of the EA / LA programmes and lack of availability of the EA components within the routinely published documentation.

Research

- The Southern Coastal Group has provided technical support for SCOPAC including the delivery of SCOPAC's approved research programme. The research programme continues to provide valuable information for its constituent members with the aim of undertaking cutting-edge research that will be of direct benefit to those involved in coastal risk management, both by contributing funding towards national projects that can be tested along the south coast of England, as well as by supporting sub-regional research projects and providing guidance information. A particular benefit is the use of the in-house skills from within the partner organisations to conduct some of the research, which enables focused research to be conducted with the benefits of excellent local knowledge, and in support of the government's localism agenda

- **Extreme wave conditions within the SCOPAC region**

An investigation into extreme wave conditions in the SCOPAC region conducted by Professor Andy Bradbury is now largely complete. Key conclusions suggest that the central south coast is regularly subject to conditions that are not generally considered in scheme design. Current scheme design does not account for bi-modal conditions, where there is a combination of both local wind waves and swell waves.



The implication is that greater overtopping and wave run-up on beaches might be expected than traditional design advice might suggest. Numerous unpredicted wave flooding events have occurred at sites under management of both the EA and Local Authorities; these are all attributed to these conditions.

Consequently, many defences in most of the SCOPAC region are not designed to a high enough standard. Most of the Solent shoreline is unaffected by these conditions as it is protected by the Isle of Wight from swell waves, but the open coast is vulnerable along most of the SCOPAC region.

The conclusions support the need for a change in the design approach where these conditions are present. This is likely to take several years and considerable additional (national) funding to deal with. An application was made to develop this, within the MTP, but was declined in 2010. This has been resubmitted in 2011.

The problem arising from the research conclusions has already been highlighted to the EA Sustainable Asset Management Theme Advisory Research Group (SAMTAG), to a workshop for the EA flood forecasters, and a section of the new CIRIA Beach Management Manual now includes a reference to it. Some very senior UK coastal engineers have considered this to be a major issue, suggesting that it should be dealt with as a nationally funded EA research project in the “must do” category.

The study demonstrates the value of conducting regional scale research programmes that would otherwise not be funded. The outcomes of the study confirm the value of both the regional coastal monitoring programme and the SCOPAC research programmes.

- **ACCESS (Adapting to Climate Change along England's Southern Shorelines)**

A major research initiative this year has been the development of the SCOPAC funded ACCESS project. Technical development of this project has continued to show anomalies in the current approach to valuing coastal erosion related economic losses.

The ACCESS project is investigating methods associated with effectively quantifying 'Assets at risk along the SCOPAC coastline'.

There is a need for more refined assessments to be made of the methodologies currently applied in Shoreline Management Plans and Flood and Coastal Erosion Risk Management Strategies, to ascertain coastal erosion risk and identify and value the assets at risk, looking ahead over the next one hundred years.

Coastal and Geotechnical Services, Halcrow and the Channel Coastal Observatory (CCO) are undertaking the work for this project.

As an introduction to the project, the CCO have identified "hotspots" across the SCOPAC region where more than 40 properties are at risk from erosion and/or flooding over the next 100 years. The focus is on sites under threat from instability, erosion, and erosion followed by flooding.



Coastal change 'hotspots' across the SCOPAC region

Case studies for each geomorphological type were selected from a list of hotspots. A variety of examples were taken from across the SCOPAC region. Each case study details historical and predicted future geomorphological evolution, coastal monitoring, coastal management, adaptation of the shoreline and lessons learnt. A critique of Shoreline Management Plan erosion assessment methods and national methods of erosion prediction was also undertaken for a selection of sites, as was the data used for assessing assets at risk and the monetary values applied to the assets at risk

The ACCESS project team are planning to print the document in the Autumn of 2011 and hold a launch event at the National Oceanography Centre inviting Councillors, planners and consultants.

- **Sediment Tracer Studies, East Solent**

Havant Borough Council is developing a new shingle tracer study technique. PIT tags, used for animal identification, are embedded into the native flint/chert pebbles of Hayling Island and Portsea Island. These are monitored to confirm sediment transport pathways around the south side of the islands. The study is being carried out to supplement the South West Hayling Island Beach Management Study.



- **Maintenance of Coastal Structures - Phase 1: Timber Groynes**

A SCOPAC research project entitled Maintenance of Coastal Structures: Phase 1 - Timber Groynes is under development and a preliminary start was made with this workshop held in March 2010 at the National Oceanography Centre, Southampton.

Approximately 30 officers - coastal engineers and scientists - attended the morning event. Detailed notes of the presentations and Q&A session will feed directly into the project and are already available on the website.



- **CIRIA Beach management manual**

SCOPAC has contributed £10,000 towards the new edition of the CIRIA Beach Management Manual which was published in late 2010. This important publication has benefited from a launch held at Southampton, which has maximised its value to Southern Coastal Group and SCOPAC's members.

Coastal group performance

A clear demonstration of the value for money to coastal group members is evident by reference to the deliverables achieved from both the action plan and from the SCOPAC research programme. The savings made to the partner organisations through the coordination of investment to optimise delivery is clearly evident (Graph 1 summarises Table 1).

Deliverables achieved from Action Plan

1. Publish an annual forward programme of meeting dates for SCOPAC
2. Maintain an up to date database of SCOPAC Contact details.
3. Continue to develop and improve the Southern Coastal Group and SCOPAC websites.
4. Prepare an annual report and business plan.
5. Arrange early meetings with the RFCC Chairman and Environment Agency officers to discuss coast protection input to Regional Flood Defence Committees.
6. Maintain firm links with the Solent and Dorset Coastal Fora and the LGA Coastal Special Interests Group.
7. Continue to support technical field meetings and conferences where appropriate.
8. Support the successful completion/implementation of SMP2s, Strategy Studies and Medium Term Plans.
9. Oversee the successful completion of the SCOPAC research programme.
10. Deliver the research programme for SCOPAC through the Southern Coastal Group.
11. Support the future extension of the Strategic Monitoring Programme.
12. Examine and support opportunities for joint-working, collaboration and joint-procurement between Group members
13. Support workshops and training activities within the Group and/or with adjacent Groups on key topics and new scientific advances
14. Encourage attendance by Group members at key coastal-related national/international conferences
15. Liaison with EA over funding issues relating to Group's new role and delivery of Strategic Overview
16. Facilitate improved links between coastal engineers, development control and planning policy officers through their involvement in meetings and events
17. Exchange good practice on coastal risk management with Officers of the Environment Agency
18. Assist EA officers with preparation of Medium and Long Term Plans
19. Review research programme against timescales and targets
20. Monitor progress on individual research projects
21. Approve minor projects for funding within agreed 'De-minimus' limits

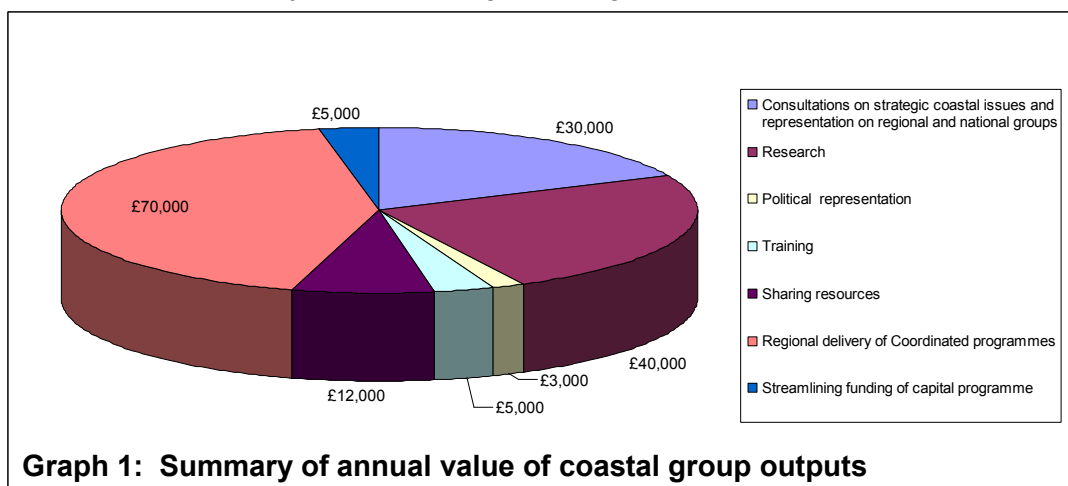


Table 1 Annual value of coastal group activities to partner organisations

Activity	Method of saving and technical benefits	Specific examples	Typical annual value of coastal group contribution to each partner organisation i.e. cost of doing work in isolation
Consultations on strategic coastal issues and representation on regional and national groups	<ul style="list-style-type: none"> • Avoidance of individual organisation effort • Coordinated regional approach 	<ul style="list-style-type: none"> • Floods and waters act • CLG revenue funding • DEFRA funding review • National coastal chairs • National coastal forum • Representation on RFCC 	£30,000
Research	<ul style="list-style-type: none"> • Focused regional programme • Improved design and risk assessment • Improved maintenance techniques • Raising political profile of regional issues 	<ul style="list-style-type: none"> • Extreme wave climate • Timber maintenance • Sediment tracer studies • ACCESS • Beach management manual 	£40,000
Political representation	<ul style="list-style-type: none"> • Coordinated approach to political consultations with central government • Raising political profile of regional issues with Westminster politicians 	<ul style="list-style-type: none"> • Landslide funding 	£3,000

Activity	Method of saving and technical benefits	Specific examples	Typical annual value of coastal group contribution to each partner organisation i.e. cost of doing work in isolation
Training	<ul style="list-style-type: none"> • Provision of expert advice • Courses and conferences • Sharing experiences • Sharing skills • Succession planning 	<ul style="list-style-type: none"> • Rock Groyne workshop • Field visit • Beach management manual launch • Regional Monitoring Annual review • MTP workshop 	<p style="text-align: right;">£2,000-5000</p> <p style="text-align: right;">(depends on number of officers/members)</p>
Sharing resources	<ul style="list-style-type: none"> • Development of procurement frameworks • Collaborative working 	<ul style="list-style-type: none"> • Portsmouth/Havant led consultant framework • NFDC led regional monitoring framework • Regional monitoring • EA 	£12,000
Regional delivery of Coordinated programmes	<ul style="list-style-type: none"> • Regional coastal monitoring programme • SMP delivery of plans • SMP coordination of action plans 	<ul style="list-style-type: none"> • Staff time running regional programmes 	£70,000
Streamlining funding of capital programme	<ul style="list-style-type: none"> • Coordination of admin procedures 	<ul style="list-style-type: none"> • Medium term plan 	£5,000
Estimated total			£165,000

Estimates are based upon actual timesheet records, staff time costs and contracted activities for delivery of each activity conducted by officers on behalf of the coastal group.